

- Three phase or single phase AC motor
- Cross gears (ALI5-P)
- Belt drive (ALI5-PB)
- Acme lead screw or ballscrew (VRS)
- Chrome plated steel push road
- Grease (standard) or oil lubricated (on request)
- IP55, tested according to rule CEI EN 60529
NB: Only for brake motors Standard IP54, IP65 on request
- Working temperature range -10°C +60°C
- Intermittent duty S3 30% (5min) a +30°C
- Limit switch, potentiometer, encoder on request
- At-Ex II 3 D T4 version (A.C.motor) on request

| ALI5-P (Vac 3-phase) | | | | |
|----------------------|--------------|---------|------------|------------------|
| Fmax (N) | Speed (mm/s) | Version | Motor size | Motor power (KW) |
| 2700 * | 113 | M11 | IEC71 | 0.75 2 poles |
| 4000 * | 57 | M12 | IEC71 | 0.55 4 poles |
| 6600 | 28 | M13 | IEC71 | 0.55 4 poles |
| 15000 | 14 | M14 | IEC71 | 0.55 4 poles |
| 15000 | 9 | M15 | IEC71 | 0.37 4 poles |
| 15000 | 5 | M16 | IEC71 | 0.25 4 poles |

| ALI 5-PB VRS (Vac 3-phase) | | | | |
|----------------------------|--------------|---------|------------|------------------|
| Fmax (N) | Speed (mm/s) | Version | Motor size | Motor power (KW) |
| 3600 * | 233 | M61 | IEC80 | 1.1 2 poles |
| 3800 * | 194 | M62 | IEC80 | 1.1 2 poles |
| 4300 * | 117 | M63 | IEC80 | 0.75 4 poles |
| 4500 * | 97 | M64 | IEC80 | 0.55 4 poles |
| 4500 * | 49 | M65 | IEC71 | 0.25 4 poles |

* When speed is more than 30 mm/s and/or strokes longer than 350mm, check STROKE SETUP section.

With single-phase motors type M (see motor choice guideline in paragraph ACCESSORIES) performances are 20% lower than the three-phase motor.

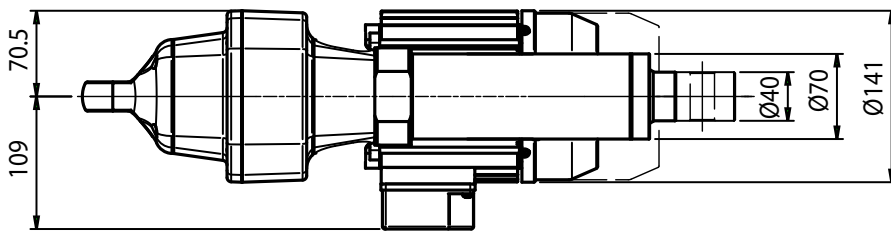
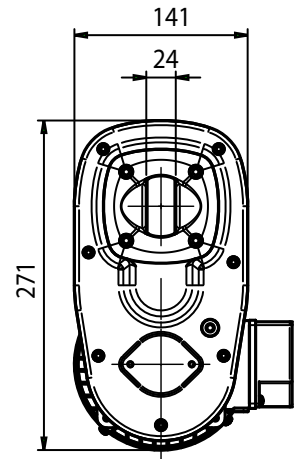
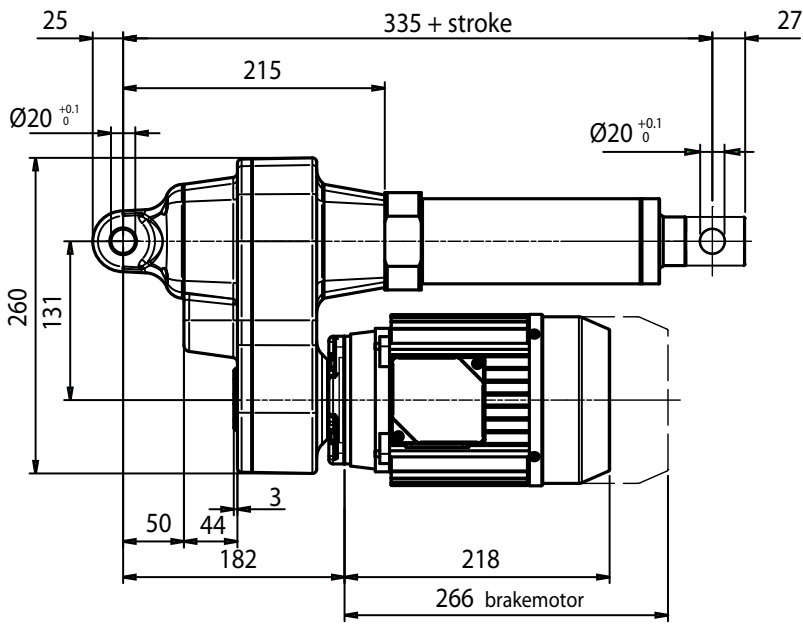
→ The brakemotor is strongly recommended

BEFORE OPERATING ACTUATOR MAKE SURE YOU READ AND UNDERSTOOD BASIC OPERATIONAL INSTRUCTIONS SHOWN ON USERMANUALS, AVAILABLE FROM WEBSITE.

THIS DOCUMENT DISPLAYS MOST TYPICAL STANDARD FEATURES AND SETUPS: CONTACT OUR OFFICES FOR MORE. ACTUATOR SHALL NOT COME TO MECHANICAL STROKE-END, TO AVOID FAILURES. CONSIDER MECVEL'S LIMITSWITCHES (MODEL ALI5-F or ALI5-FCM) OR PUT THEM ON MACHINE/FRAME.

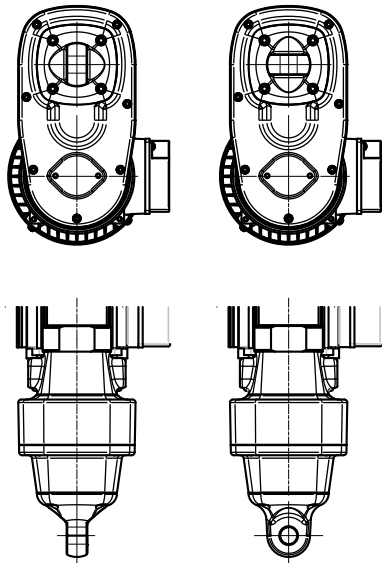


MecVel reserves the right to change products information and/or features without notice; all data contained in this catalogue are purely indicative and not binding for the company.



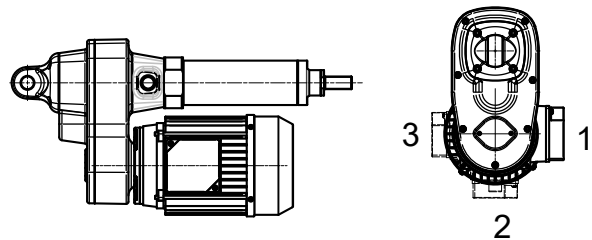
REAR END

E-BOX POSITION



P1 (standard)

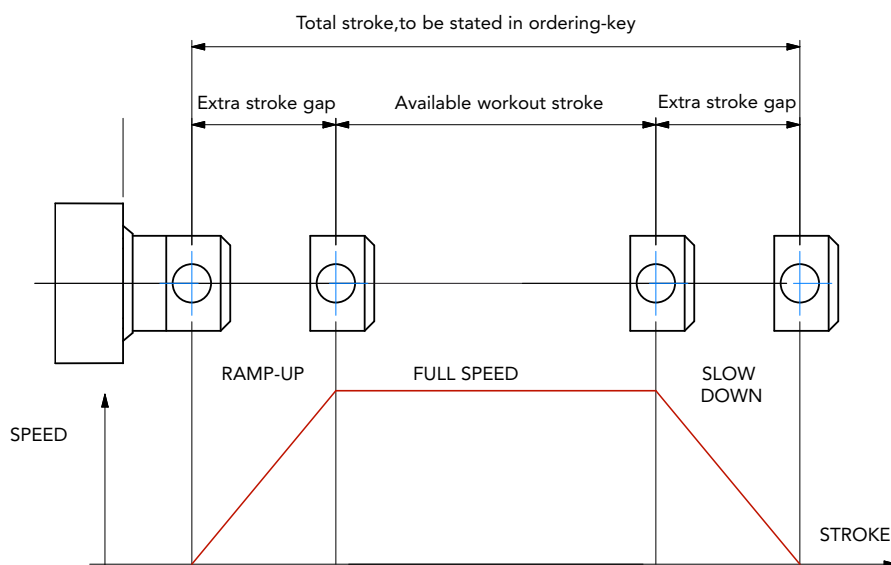
P2 (rotated 90°)



STROKE SETUP

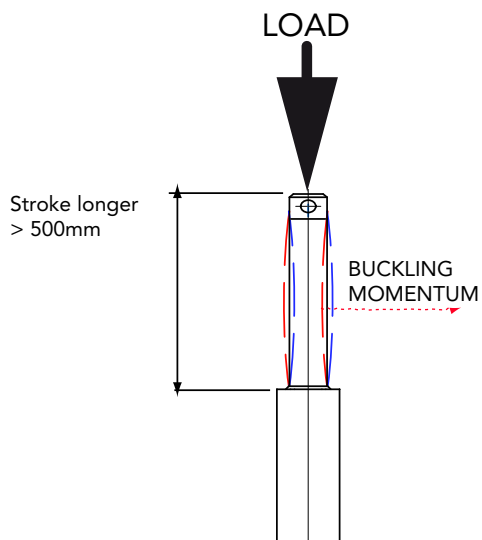
Useful tips for handling stroke and avoid run-on-block collision.

- When stroke is more than 350 mm, add 50 mm extra-stroke as guidance, and put corresponding value in ordering-key.
- **WARNING SPEED-TIMING ALONG STROKELENGTH:** ramps are extremely important when speed is >30 mm/s!!! Inverter or PWM drive recommended!
- The more speed raises the more extra stroke has to raise too.



BUCKLING

When stroke is longer than 500mm, BUCKLING can be a risk: please check mounting with our offices and/or see usermanuals.



IMPORTANT:

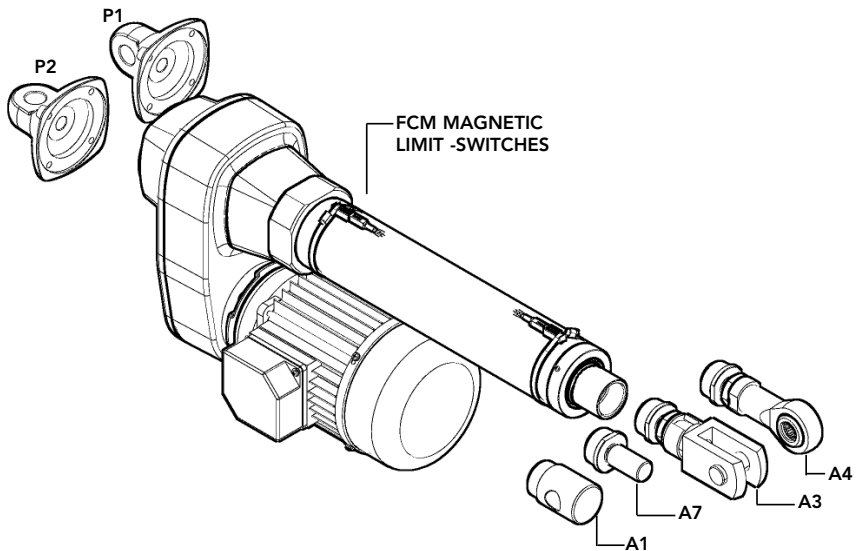
Long strokes, even if load is low, can generate significant buckling momentums, as sketch shows. This happens when actuator is in its all-opened position: that's the reason why we recommend 100 mm extra-stroke. Pushtube will have this 100 mm-portion always inside the overtube, improving guidance against buckling.

For more information on this, contact our office.

ALI5-P/0250/M16/CA-400/50-T-71-4-0,25/AB/1/E06/2FCM0/POT01A/P1/A1/

| | | | |
|-------------------------|--|-----------------|-------------------|
| MODEL | ALI5-P / ALI5-PB VRS / ALI5-P FCM / ALI5-P FCI | | |
| STROKE | es. 250 mm = 0250 | | |
| VERSION | M11 / M12 / M13 / M14 / M15 / M16 (ALI5-P) M61 / M62 / M63 / M64 / M65 (ALI5-PB) M00 = Not standard speed Flanged version = advice reduction ratio and screw pitch | | |
| MOTOR | AC version, voltage, type, size, nr. of poles, power With motorflange only put 0 With special motorflange put: PD | | |
| AC MOTOR OPTIONS | Motorflange: for motorflange version only advise size - i.e. for IEC71 B14 put 71B14 Protection Degree: IP65, for selfbrake motor IP54 standard Brake type: for brakemotors only (es. FECA) Options: Advise if needed (es.. AB 2'shaft) | | |
| E-BOX POSITION | 1 | | |
| ENCODER | Options pg.76 None: Leave blank | | |
| LIMIT-SWITCHES | None: Leave blank | | |
| POTENTIOMETER | POT01A (1Kohm) | POT10A (10Kohm) | None: Leave blank |
| REAR END | P1 = Eyelet (standard) P2 = Eyelet (90°) | | |
| FRONT END | A1 = Eyelet (standard) A3 = Yoke + Clip A4 = Rod end A7 = M20 male | | |

NOTE: COMPLETE THE ORDERING KEY ADDING THE OPTIONS YOU CAN FIND IN THE "ACCESSORIES AND OPTIONS" SECTION



Note: "B" dimension variations depending on model

- ALI5-P = See pictures
- ALI5-P stroke > 500 = + 20 mm
- ALI5-P-FCM stroke < 500 = + 40 mm
- ALI5-P-FCM stroke > 500 = + 60 mm
- ALI5-P-FCI stroke < 500 = + 30 mm
- ALI5-P-FCI stroke > 500 = + 50 mm
- ALI5-P with safety nut "G" = + 50 mm
- ALI5-P with antirotation device "L" = + 15 mm
- ALI5-P with bellows = + 25 (excluding FCM and FCI version)

