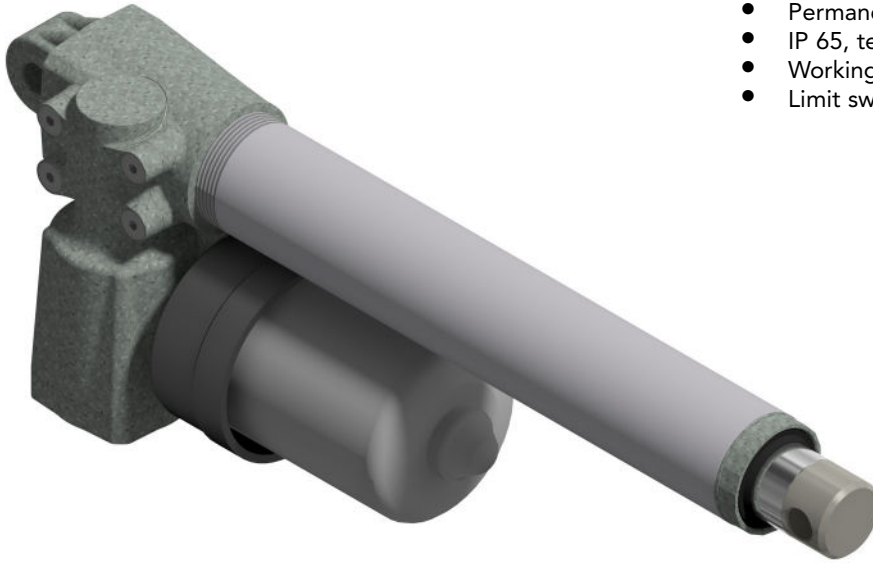


- Permanent magnet motor 12-24 Vdc
- Double worm gearbox
- Acme lead screw or ballscrew (VRS)
- Chrome plated steel push rod
- Permanent grease lubrication
- IP 65, tested according to rule CEI EN 60529
- Working temperature range -10°C +60°C
- Limit switches, potentiometer and encoder on request



ALI2-P (Vdc)						
Fmax (N)	Speed (mm/s)	Version	Motor size	Motor speed (rpm)	Max Current for F max(A) 24Vdc **	Fs % base 5 min.
2400	30	M01	59	4000	9,5	10
3000	15	M03	59	4000	7	30
4200	10	M04	59	4000	9,5	10
4200	7	M05	59	4000	7	30
4200	2.5	M07	59	4000	3	30
4200	0.6	M09	59	4000	1	30

When strokes are longer than 350mm, BRAKEMOTOR IS RECOMMENDED

\*\* For 12 Vdc power supply currents are doubled and loads are 20% lower.

BEFORE OPERATING ACTUATOR MAKE SURE YOU READ AND UNDERSTOOD BASIC OPERATIONAL INSTRUCTIONS SHOWN ON USERMANUALS, AVAILABLE FROM WEBSITE.

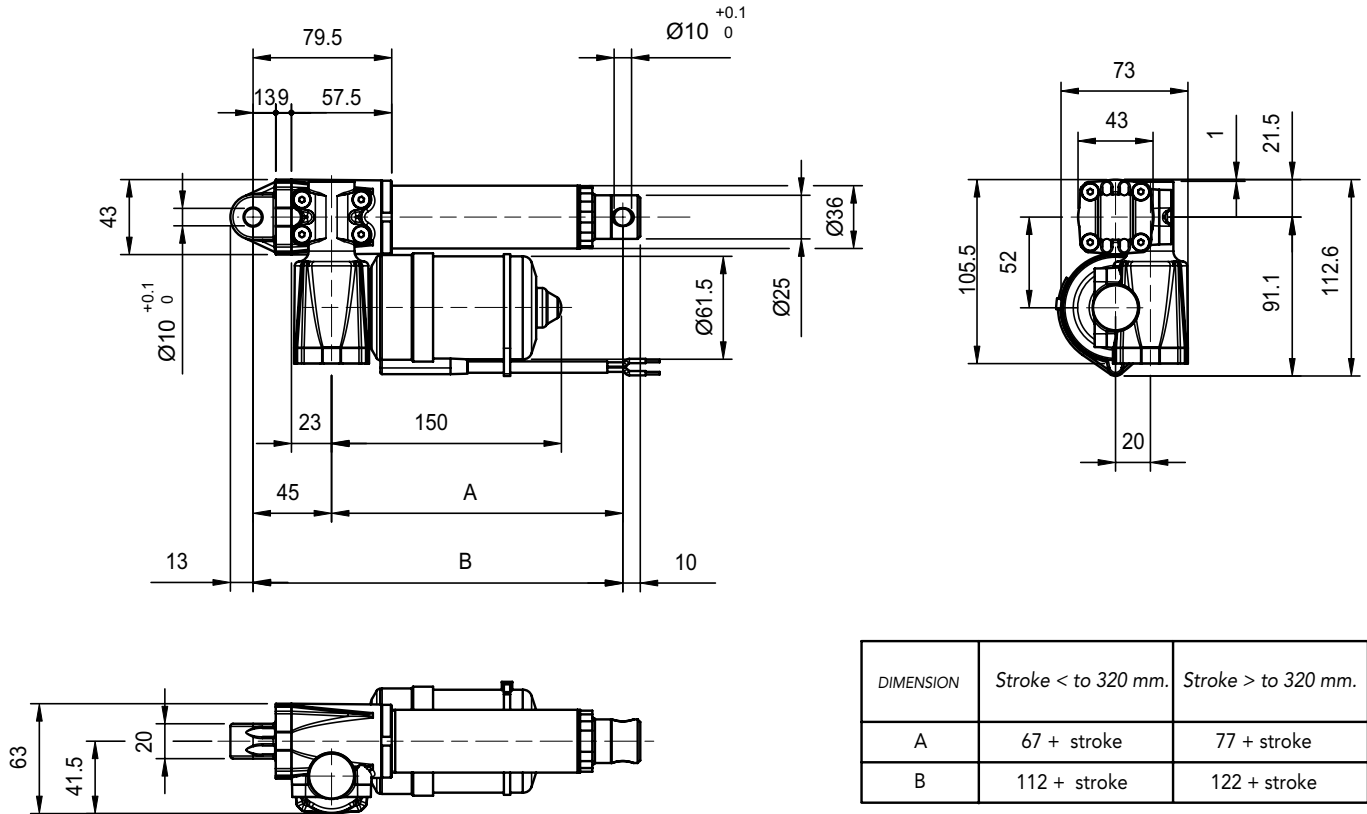
THIS DOCUMENT DISPLAYS MOST TYPICAL STANDARD FEATURES AND SETUPS: CONTACT OUR OFFICES FOR MORE.

ACTUATOR SHALL NOT COME TO MECHANICAL STROKE-END, TO AVOID FAILURES.  
CONSIDER MECVEL's LIMITSWITCHES ( MODEL ALI2-F or ALI2-FCM) OR PUT THEM ON MACHINE/FAME.

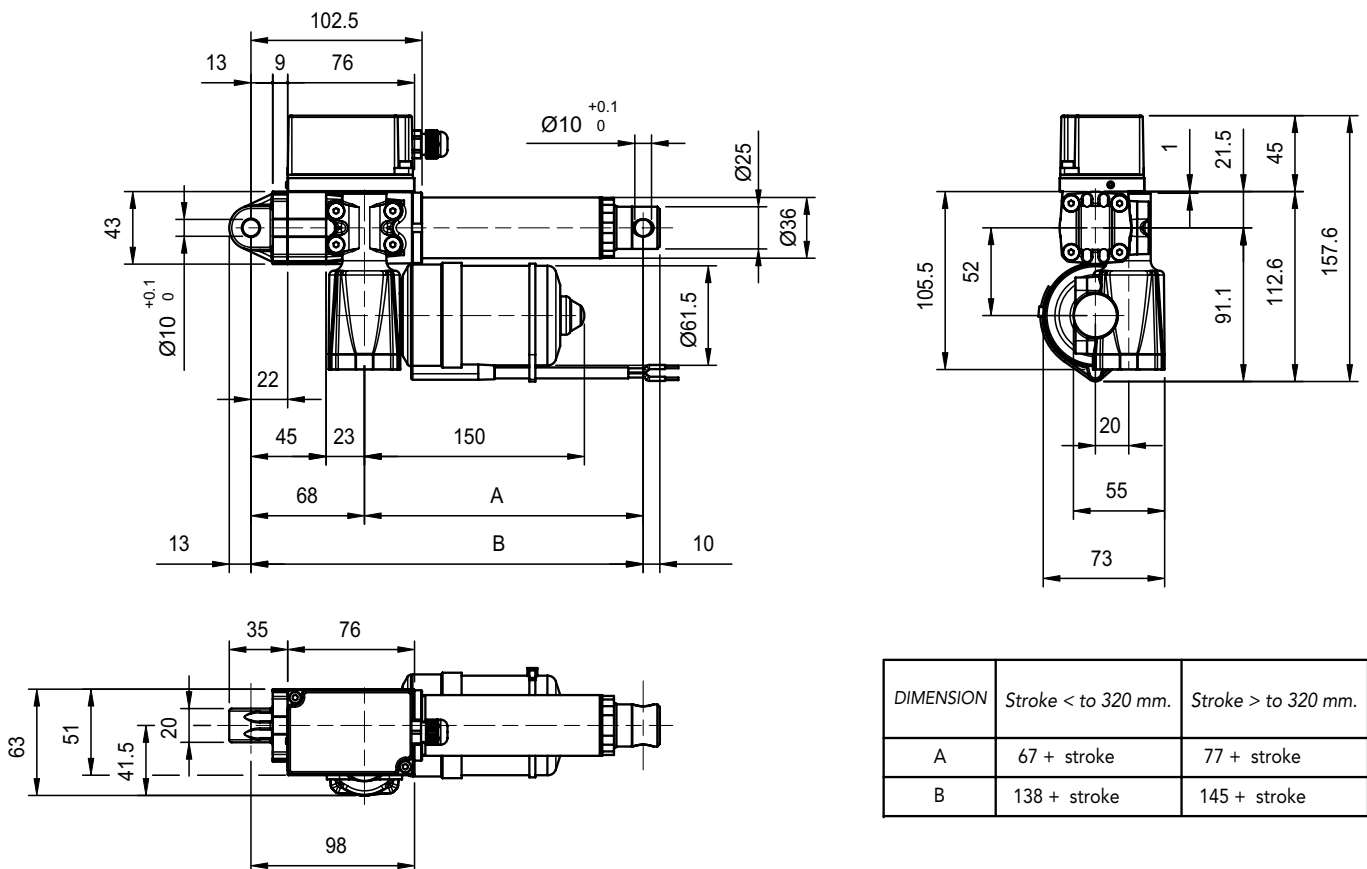


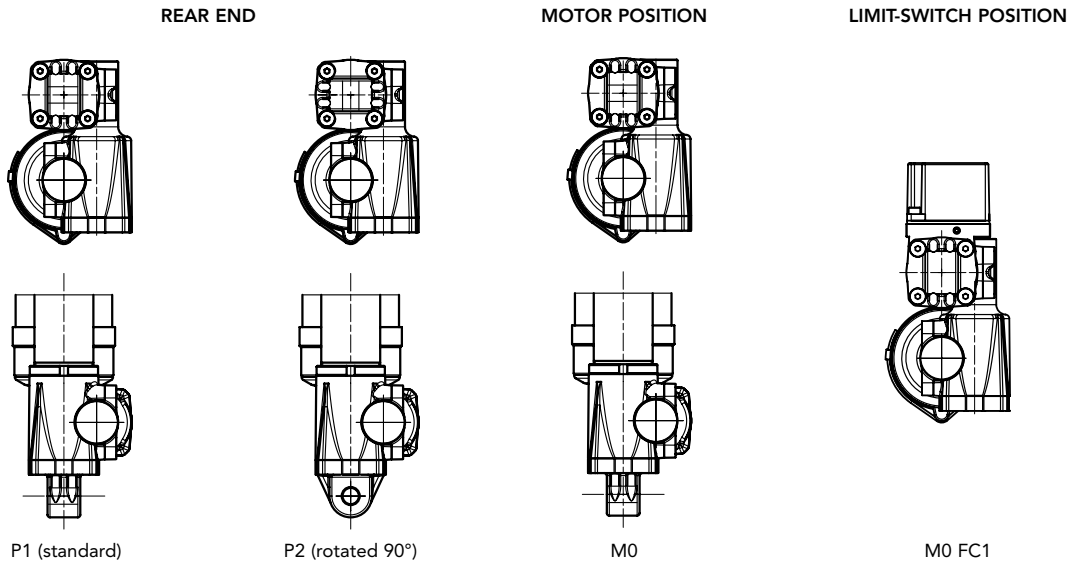
MecVel reserves the right to change products information and/or features without notice; all data contained in this catalogue are purely indicative and not binding for the company.

VERSION WITHOUT LIMITSWITCHES



VERSION WITH LIMITSWITCHES

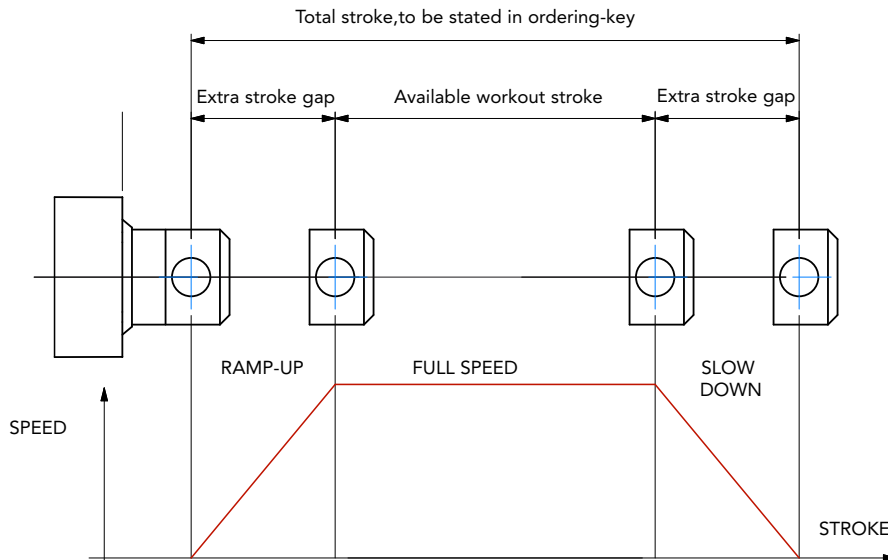




## STROKE SETUP

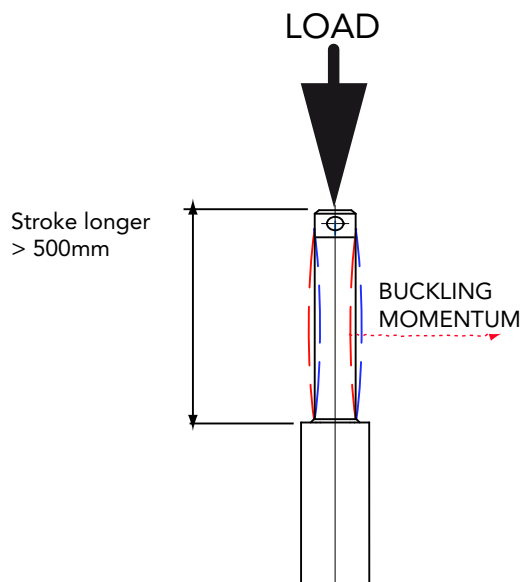
Useful tips for handling stroke and avoid run-on-block collision.

- When stroke is more than 350 mm, add 50 mm extra-stroke as guidance, and put corresponding value in ordering-key.
- **WARNING SPEED-TIMING ALONG STROKELENGTH:** ramps are extremely important when speed is >30 mm/s!!! Inverter or PWM drive recommended!
- The more speed raises the more extra stroke has to raise too.



## BUCKLING

When stroke is longer than 500mm, BUCKLING can be a risk: please check mounting with our offices and/or see usermanuals.



### IMPORTANT:

Long strokes, even if load is low, can generate significant buckling momentums, as sketch slows. This happens when actuator is in its all-opened position: that's the reason why we recommend 100 mm extra-stroke. Pushtube will have this 100 mm-portion always inside the overtube, improving guidance against buckling.

For more information on this, contact our office.

**ALI2-P/0250/M01/24/M0/E01/2FC1/POT01A/FC1/P1/A1/**

**MODEL** \_\_\_\_\_  
 ALI2-P                                      ALI2-P-F                                      ALI2-P-FCM

**STROKE (mm)** \_\_\_\_\_  
 es. 250 mm = 0250

**VERSION** \_\_\_\_\_  
 M01 / M03 / M04 / M05 / M07 / M09  
 M00 = Not standard speed

**MOTOR** \_\_\_\_\_  
 12 = 12 Vdc                                      24 = 24 Vdc

**MOTOR POSITION** \_\_\_\_\_  
 M0

**LIMIT SWITCHES** \_\_\_\_\_  
 2FC1                                      None: Leave blank

**POTENTIOMETER** \_\_\_\_\_  
 POT01A (1Kohm)                                      POT10A (10Kohm)                                      None: Leave blank

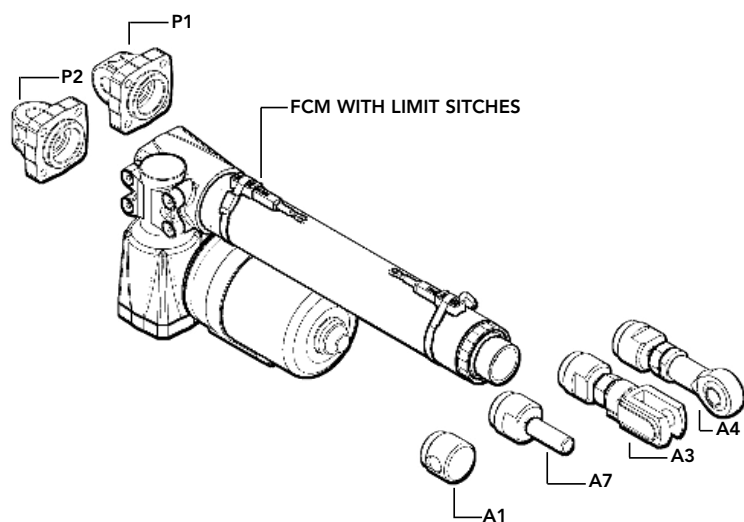
**ENCODER** \_\_\_\_\_  
 Options pg.76                                      None: Leave blank

**LIMIT SWITCHES POSITION** \_\_\_\_\_  
 FC1                                      None: Leave blank

**REAR END** \_\_\_\_\_  
 P1 = Eyelet (standard)    P2 = Eyelet (90°)

**FRONT END** \_\_\_\_\_  
 A1 = Eyelet (standard)    A4 = Rod end                                      A3 = Yoke + Clip                                      A7 = M10 male

**NOTE: COMPLETE THE ORDERING KEY ADDING THE OPTIONS YOU CAN FIND IN THE "ACCESSORIES AND OPTIONS" SECTION**



**Note:** "B" dimension changes according to model

- ALI2-P= See pictures
- ALI2-P stroke > 320 mm = + 10 mm
- ALI2-PF = + 23 mm
- ALI2-PF stroke > 320 mm = +33
- ALI2-P-FCM = + 33 mm
- ALI2-P-FCM stroke > 320 mm = +43 mm
- ALI2-P with safety nut "G" = + 30 mm
- ALI2-P with bellows = + 20mm

