

## Linear Actuators

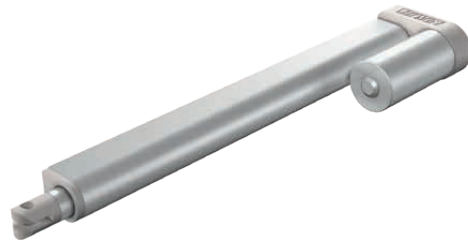
HIWIN linear actuators LAS

### 3. HIWIN linear actuators LAS

#### 3.1 LAS1

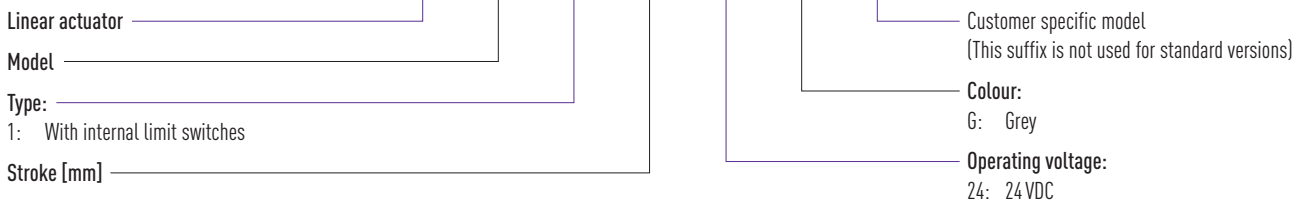
**Product specifications:**

- Standard cylinder
- Screw type: ACME
- Weight (at a stroke of 200 mm): 1.04 kg
- Protection class: IP54
- Operating temperature: +5 °C to +40 °C

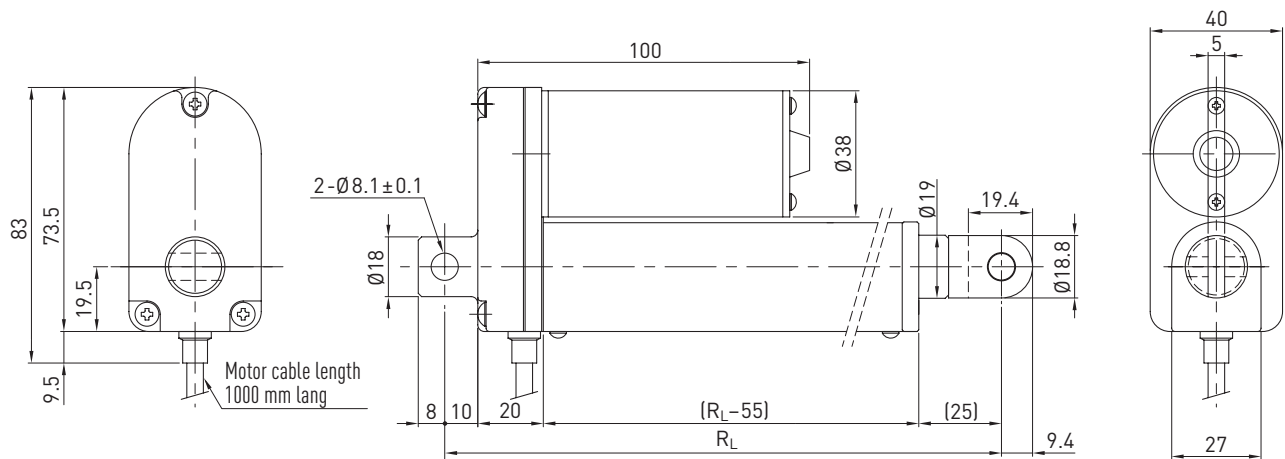


#### 3.1.1 Order code

LAS1 1 1 200 24 G E



#### 3.1.2 Dimensions



$R_L = S + 119$

R<sub>L</sub>: Zero stroke length [mm]

S: Stroke [mm]

**Note:**

If the mounting lugs do not lie precisely flush, the piston rod may twist as far as 180° anticlockwise.

### 3.1.3 Product characteristic curves and technical data

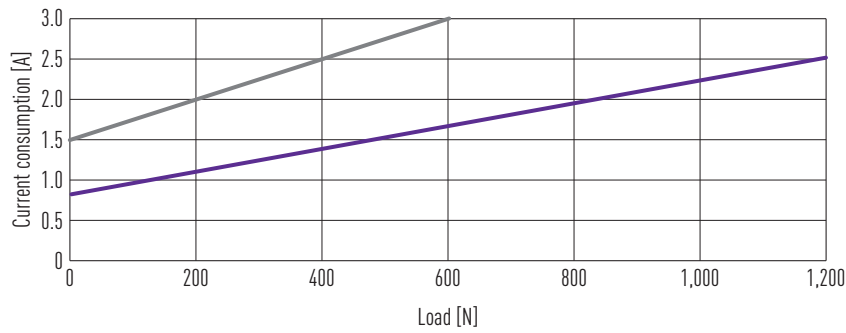
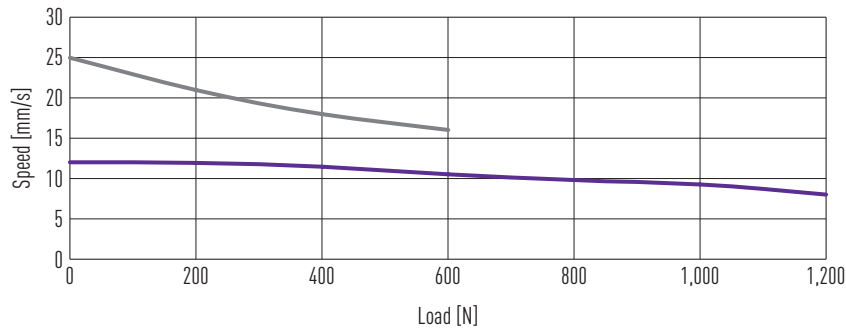


Table 3.1 **Technical data LAS1**

Model	Max. thrust [N]	Max. pull [N]	Max. holding force [N]	Speed load = max/load = 0 [mm/s]	Standard stroke S [mm]					Duty cycle [%]	Max. current (24 VDC) [A]
					50	100	150	200	250		
LAS1-1	1,200	1,200	800	8/12	50	100	150	200	250	10	2.5
LAS1-2	600	600	300	16/25	50	100	150	200	250	10	3.0

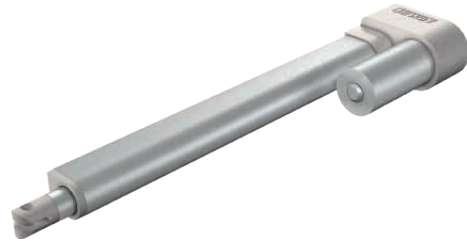
# Linear Actuators

## HIWIN linear actuators LAS

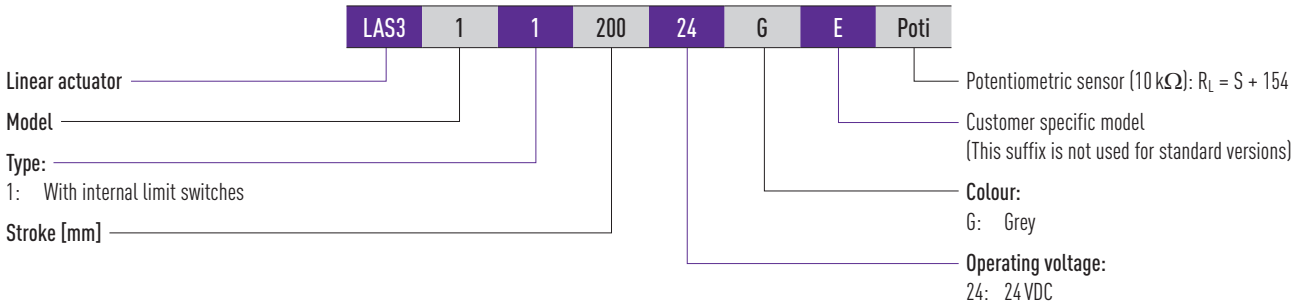
### 3.2 LAS3

#### Product specifications:

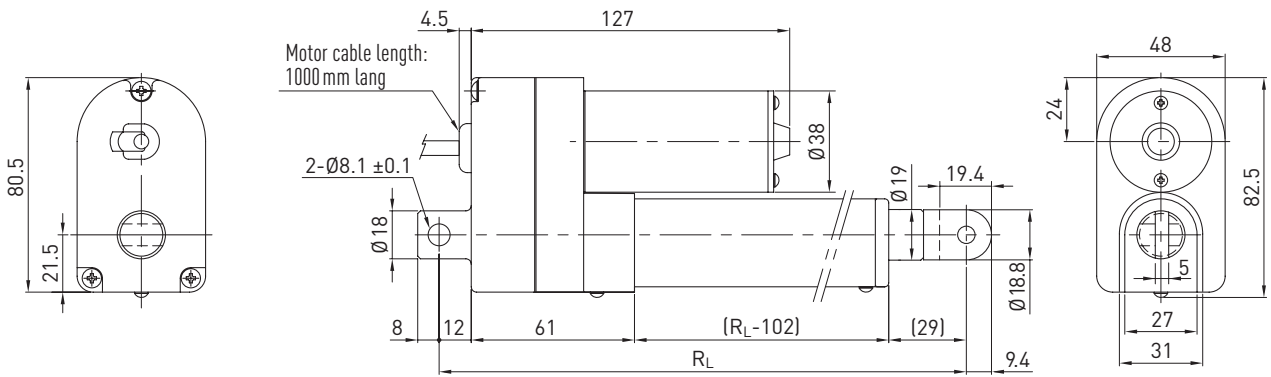
- Standard cylinder
- Distance measuring system
- Screw type: ACME
- Weight (at a stroke of 200 mm): 1.27 kg
- Protection class: IP54
- Operating temperature: +5 °C to +40 °C
- Potentiometric sensor (10 kΩ):  $R_L = S + 154$



#### 3.2.1 Order code



#### 3.2.2 Dimensions



$R_L = S + 146$   
 $R_L$ : Zero stroke length  
 S: Stroke

#### Note:

If the mounting lugs do not lie precisely flush, the piston rod may twist as far as 180° anticlockwise.

	Supply voltage	
	24 VDC	5 VDC
Output	High level 24 VDC	TTL
	Low level 0.2 V/40 mA	—
	PNP	—
	Open collector	—

### 3.2.3 Product characteristic curves and technical data

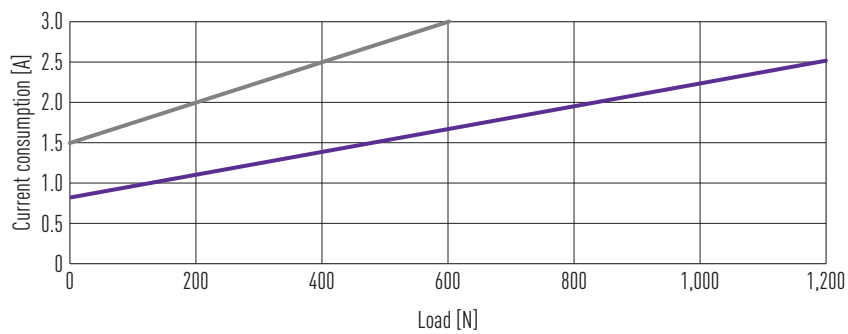
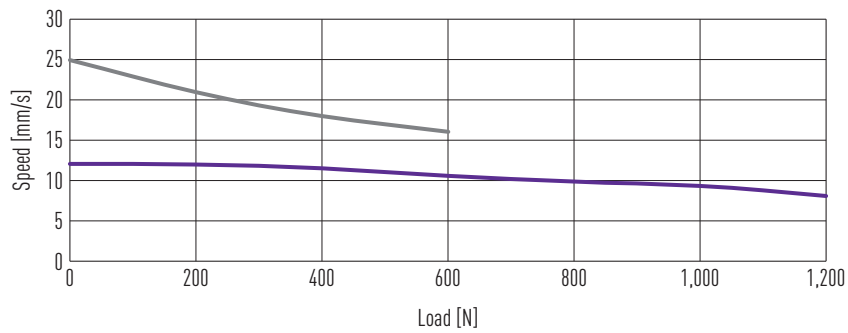


Table 3.3 Technical data LAS3

Model	Max. thrust [N]	Max. pull [N]	Max. holding force [N]	Speed load = max/load = 0 [mm/s]	Standard stroke S [mm]					Duty cycle [%]	Max. current (24 VDC) [A]	Potentiometer resolution [ $\Omega$ /mm]
					50	100	150	200	250			
LAS3-1	1,200	1,200	800	8/12	50	100	150	200	250	10	2.5	21.0
LAS3-2	600	600	300	16/25	50	100	150	200	250	10	3.0	10.5